

PIR DETECTORS

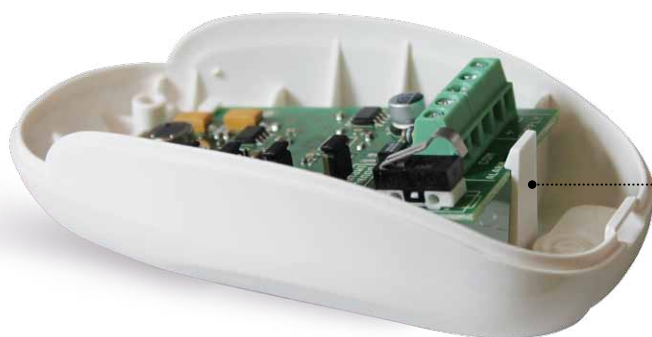
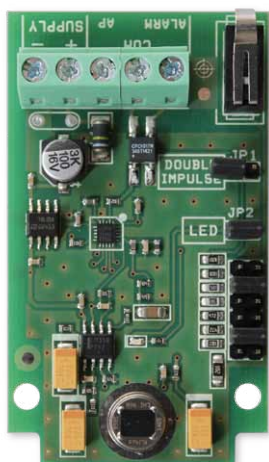
Smile

EN 50131-2-2 / GRADE 2



Pet Immunity

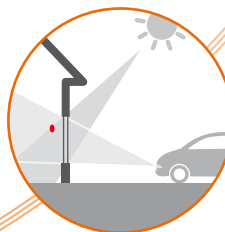
10 YEARS
warranty



Simplified
assembly
without screws



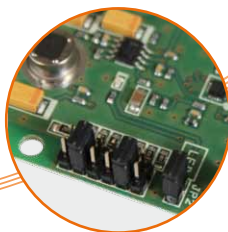
RFI digital
protection



White light digital
filter protection



New Tamper



EOL resistors
on board

BRACKET SN2
(wall bracket)



BRACKET SN4
(wall / ceiling bracket)





Smile19

EN 50131-2-2 / GRADE 2
Digital PIR

Smile19/P

EN 50131-2-2 / GRADE 2
Digital PIR
PET IMMUNE up to 15 kg



Smile20

EN 50131-2-2 / GRADE 2
Digital PIR with EOL resistors

Smile20/P

EN 50131-2-2 / GRADE 2
Digital PIR with EOL resistors
PET IMMUNE up to 15 kg



Smile19 is a Digital PIR detector, with an analysis system that takes into account the two most important changes that may occur during a movement: the speed and the intensity. With the simultaneous comparison of these two information, the detector is able to discriminate repetitive movements from intrusion, lowering the percentage of false alarms. With high thermal variations, the totally digital temperature compensation system, guarantees a great performance. Has 15 mt coverage, with angle of 90°. With the special lens is equipped of creep zone.

Available colours: white

Smile20 is a Digital PIR detector, with an analysis system that takes into account the two most important changes that may occur during a movement: the speed and the intensity. With the simultaneous comparison of these two information, the detector is able to discriminate repetitive movements from intrusion, lowering the percentage of false alarms. With high thermal variations, the totally digital temperature compensation system, guarantees a great performance. Is equipped with internal EOL resistors. Has 15 mt coverage, with angle of 90°. With the special lens is equipped of creep zone.

Available colours: white

TECHNICAL FEATURES

	SMILE 19	SMILE 20	SMILE 19/P	SMILE 20/P
EN 50131-2-2 / GRADE 2	YES	YES	YES	YES
RANGE	15 mt	15 mt	15 mt	15 mt
ANGLE	90°	90°	90°	90°
ALARM TIME	2"	2"	2"	2"
WALK TEST'S LED	YES	YES	YES	YES
SOLID STATE RELAY	YES	YES	YES	YES
INTERNAL EOL RESISTORS	-	1K, 2k2, 4k7, 5k6, 8k2	-	1K, 2k2, 4k7, 5k6, 8k2
CREEP ZONE	YES	YES	YES	YES
ANTIOPENING TAMPER	YES	YES	YES	YES
PULSE COUNTER	YES	YES	YES	YES
RFI PROTECTION	30 V/m	30 V/m	30 V/m	30 V/m
TEMPERATUR COMPENSATION	YES	YES	YES	YES
DIGITAL ANALYSIS	YES	YES	YES	YES
BRACKET AVAILABLE	YES	YES	YES	YES
POWER SUPPLY	13.8 Vdc	13.8 Vdc	13.8 Vdc	13.8 Vdc
CONSUMPTION	12 mA	12 mA	12 mA	12 mA
HOUSING	ABS	ABS	ABS	ABS
PET IMMUNITY	-	-	YES	YES
OPERATING TEMPERATURE	from -10 °C to +40 °C			
DIMENSIONS	110 x 60 x 46 mm			