



S05, R05, ICC05, STRAP

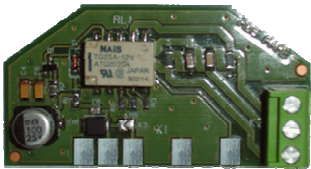
Bases & accessories



BASE 05

Base for SD3 05 range of detectors.

Dimensions: 122 (∅) x 22(h)mm	Weight: 100g
Material: ABS	Cable type: max 1,5mm ²

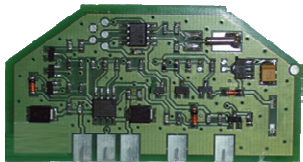


R05.

Plug-in relay board for 05 detectors, to be plugged in S05 base.

R05 operate a relays 30V/2A to monitor external modules. It provides 1 Normally Closed output (NC) and 1 Normally Opened (NO) output. Both outputs are free of voltage.

Weight: 150g	Supply: 10Vdc to 28Vdc Nominal: 24V
Dimension: 64 x 34 x 1.6 mm	Consumption: 100 µA on standby. 12mA on activation.
Material: Epoxy glass. Electronic board to be inserted on base	Contacts rating: Free of voltage. 2A, 30V on resistive load.



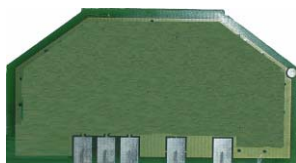
ICC05

Plug in isolator board for 05 detectors, to be plugged in S05 base.

Makes possible the isolation of sections in short-circuit located between two isolators.

For lines connected in loop, 1 ICC05 (or any other type of isolator) must be connected every 32 points.

Weight: 140g	Supply: 15Vdc to 28Vdc Nominal: 23Vdc
Dimension: 64 x 34 x 1.6 mm	Consumption: 150 µA on standby 350 µA on activation (open status)
Material: Epoxy glass. Electronic board to be inserted on base	Operating temperature: -30°C to +55°C



STRAP

Plug in additional board to allow the connection of cable with diameter higher to 1,5mm².

To be plugged in S05 board.

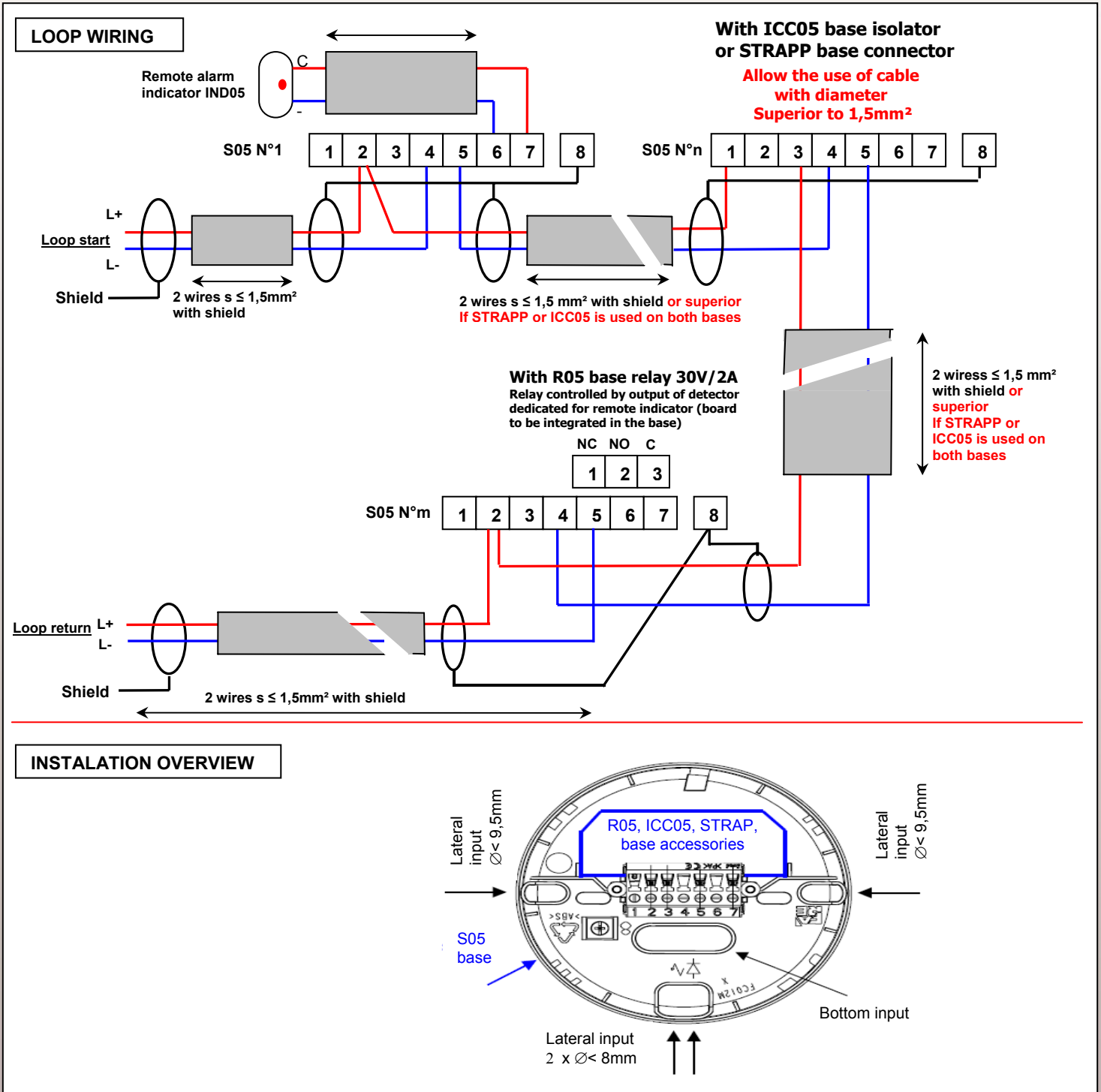
STRAP circuit board is no more than a circuit allowing to short circuit pin 1 and 3 of the S05 base in which it is plugged in. Thus 2 cable input of diameter superior to 1,5 mm² can be connected on the base.

Weight: 120g	Material: Epoxy glass. Electronic board to be inserted on base
Dimension: 64 x 34 x 1.6 mm	Operating temperature: -30° to +55°C



S05, R05, ICC05, STRAP

Bases & accessories



REFERENCE

S05
 R05
 SOUND05
 BRI

DESCRIPTION

Universal base for 05-range conventional and addressable detectors
 Plug in relay contact circuit (12V or 24V) for 05 detectors (to be plugged in S05)
 Base with internal sounder 90db @ 1m
 Waterproof universal base with glands for 05 range

