

# CONTROL PANELS

## KSeries

CONFORM TO EN 50131

AMC Cloud

ANDROID

iPhone

### NEW FEATURES

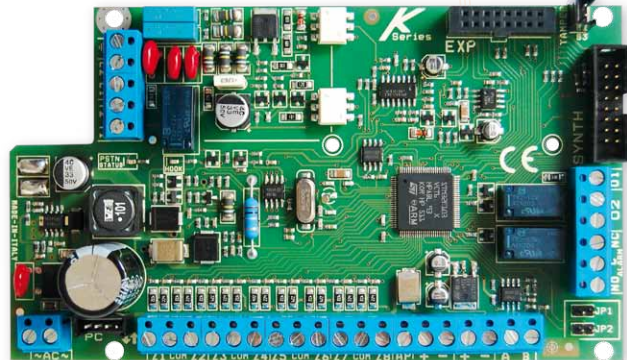
#### K4

- from 4 to **16** wired zones
- 64 wireless zones



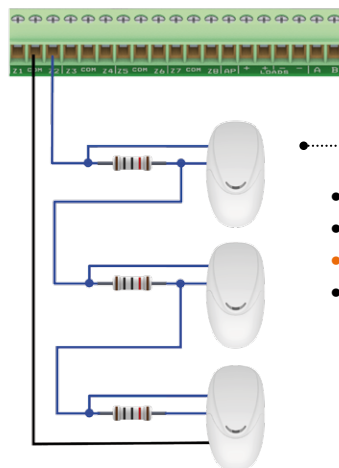
#### K8

- from 8 to **32** wired zones
- 64 wireless zones



#### K8plus

- from 8 to **64** wired zones
- 64 wireless zones



- 1 zone with single / double / triple EOL
- 2 zones with tamper protection
- **3 zones**
- many other configurations

#### Multisplit zones (without expansions)

BUS line (4 wires) RS485



PSTN  
on board

iOS / Android  
APP

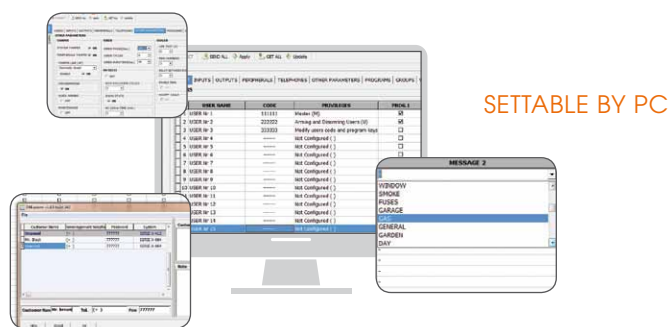


IP/GPRS/GSM  
module

Hybrid system  
(wired and wireless input)

Contact ID  
on board





The **K Series** are security control panels for building protection conform to CEI EN 50131-3:2009, CEI EN 50131-6:2008 Grade: 2. The control panel is equipped of 4/8 zones, expandable to 16/64, even without zones expansions. It is possible to obtain more zones by double and triple EOL split line. In case the split zones is not allowed, it is possible to use zones expansion. K series are able to notify one or more situations of ALARM, ROBBERY, TAMPERING and TROUBLE with different carriers:

- PSTN LINE (type ATS2) ON BOARD
- GSM and GPRS module optional
- IP module optional

The programming can be via local keypad or a PC with specific software.

TECHNICAL FEATURES	K4	K8	K8 PLUS
<b>ZONES</b>	4 - 16 wired / 64 wireless	8 - 32 wired / 64 wireless	8 - 64 wired / wireless
<b>OUTPUTS</b>	8 outputs, 1 on board, 3 on out module, 4 on K-lcd Light plus	8 outputs, 2 on board, 6 on 2 out modules, or with K-lcd Light plus	17 outputs, 2 on board, 12 on 4 out modules, with K-lcd Light plus 3 more
<b>USER CODE / TAG / REMOTE</b>	32	32	64
<b>PARTITIONS</b>	4	4	8
<b>GROUPS</b>	4	4	4
<b>WIRELESS EXPANSIONS</b>	2	2	2
<b>KEYPADS</b>	4	4	8
<b>TAG READER</b>	4	4	8
<b>LOG EVENTS</b>	1000	1000	1000
<b>PHONE NUMBERS</b>	4+4 for SMS + 4+4 for digital protocols	4+4 for SMS + 4+4 for digital protocols	8 for SMS + 8 for digital protocols
<b>COMMUNICATION DEVICES</b>	PSTN on board GSM/GPRS module IP module	PSTN on board GSM/GPRS module IP module	PSTN on board GSM/GPRS module IP module
<b>OTHER INPUTS</b>	TAMPER line mechanical antiopening tamper	TAMPER line mechanical antiopening tamper	TAMPER line mechanical antiopening tamper
<b>PC SOFTWARE</b>	YES	YES	YES
<b>REMOTE MANAGEMENT IP1</b>	HTML page apps (iOS - Android)	HTML page apps (iOS - Android)	HTML page apps (iOS - Android)
<b>TIMERS</b>	4 for day week	4 for day week	8 for day week
<b>POWER SUPPLY</b>	1.5A @ 13.8Vdc	1.5A @ 13.8Vdc	1.8A @ 13.8Vdc