

## CONTROL PANELS

# XSeries

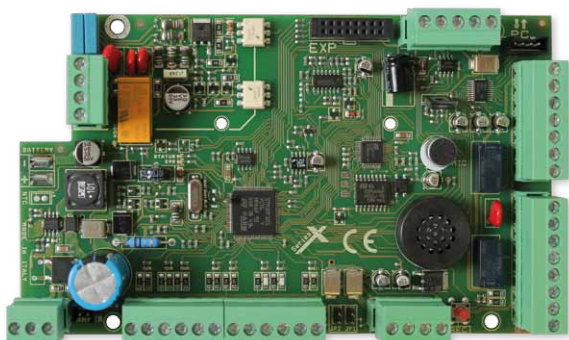
CONFORM TO EN 50131

AMC Cloud

ANDROID

iPhone

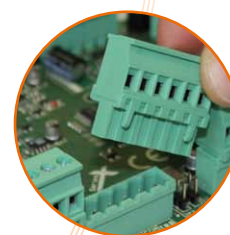
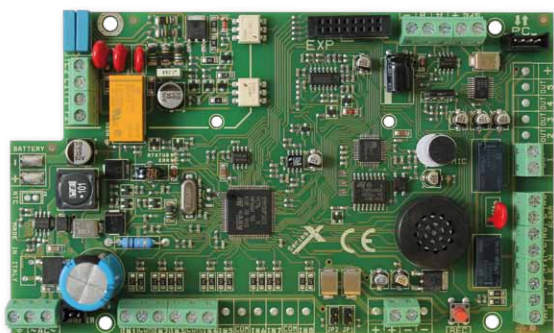
### X824



### X864



### X412



Clamps  
removable  
(X824-X864)



up to 1 km

BUS line  
(4 wires) RS485

IP/GPRS/GSM  
module

PSTN  
on board

Voice keypad

iOS / Android  
APP

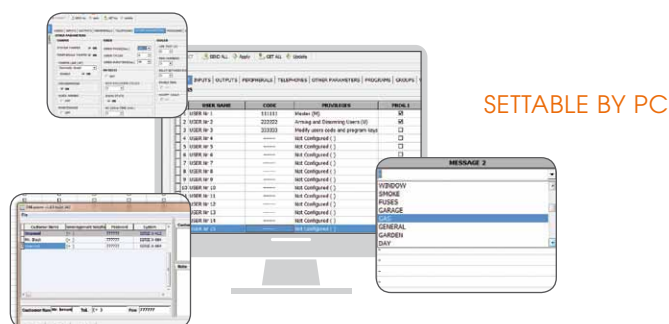
Contact ID  
on board



Voice  
managing

Hybrid system  
(wired and wireless input)





The **X Series** are the new control panels based on easy of use and easy of programming. For this reason, X412, X824, X864 are extremely intuitive, and easy for daily management by the user and the installer. The X Series are fully manageable by Smartphone App dedicated (with the optional IP board). X Series use software that helps the technician during the various configuration steps. They have a TEST menu that allows to check the functioning of the all system (zones, outputs, voice call, SMS, contact ID, siren etc). Are provided of programmable audio support, and integrated wireless system. Conform to CEI EN 50131-3:2009, CEI EN 50131-6:2008 Grade: 2.

## TECHNICAL FEATURES

	X412	X824	X864
<b>ZONES</b>	4 - 12 wired / radio	8 - 24 wired / radio	8 - 64 wired / radio
<b>OUTPUTS</b>	5 on board expandable to 8 (with 1 expansion)	5 on board expandable to 8 (with 1 expansion)	5 on board expandable to 17 (with 4 expansions)
<b>USER CODE / TAG / REMOTE</b>	32	32	64
<b>PARTITIONS</b>	4	4	8
<b>GROUPS</b>	4	4	4
<b>WIRELESS EXPANSIONS</b>	2	2	2
<b>KEYPADS</b>	4	4	8
<b>TAG READER</b>	4	4	8
<b>LOG EVENTS</b>	1000	1000	1000
<b>PHONE NUMBERS</b>	8 for SMS + 8 for digital protocols	8 for SMS + 8 for digital protocols	8 for SMS + 8 for digital protocols
<b>COMMUNICATION DEVICES</b>	PSTN on board GSM/GPRS module IP module	PSTN on board GSM/GPRS module IP module	PSTN on board GSM/GPRS module IP module
<b>OTHER INPUTS</b>	TAMPER line - mechanical antiopening tamper	TAMPER line - mechanical antiopening tamper	TAMPER line - mechanical antiopening tamper
<b>PC SOFTWARE</b>	YES	YES	YES
<b>REMOTE MANAGEMENT IP1</b>	HTML page apps (iOS - Android)	HTML page apps (iOS - Android)	HTML page apps (iOS - Android)
<b>TIMERS</b>	4 for day week	8 for day week	8 for day week
<b>POWER SUPPLY</b>	1.5A @ 13.8Vdc	1.8A @ 13.8Vdc	1.8A @ 13.8Vdc